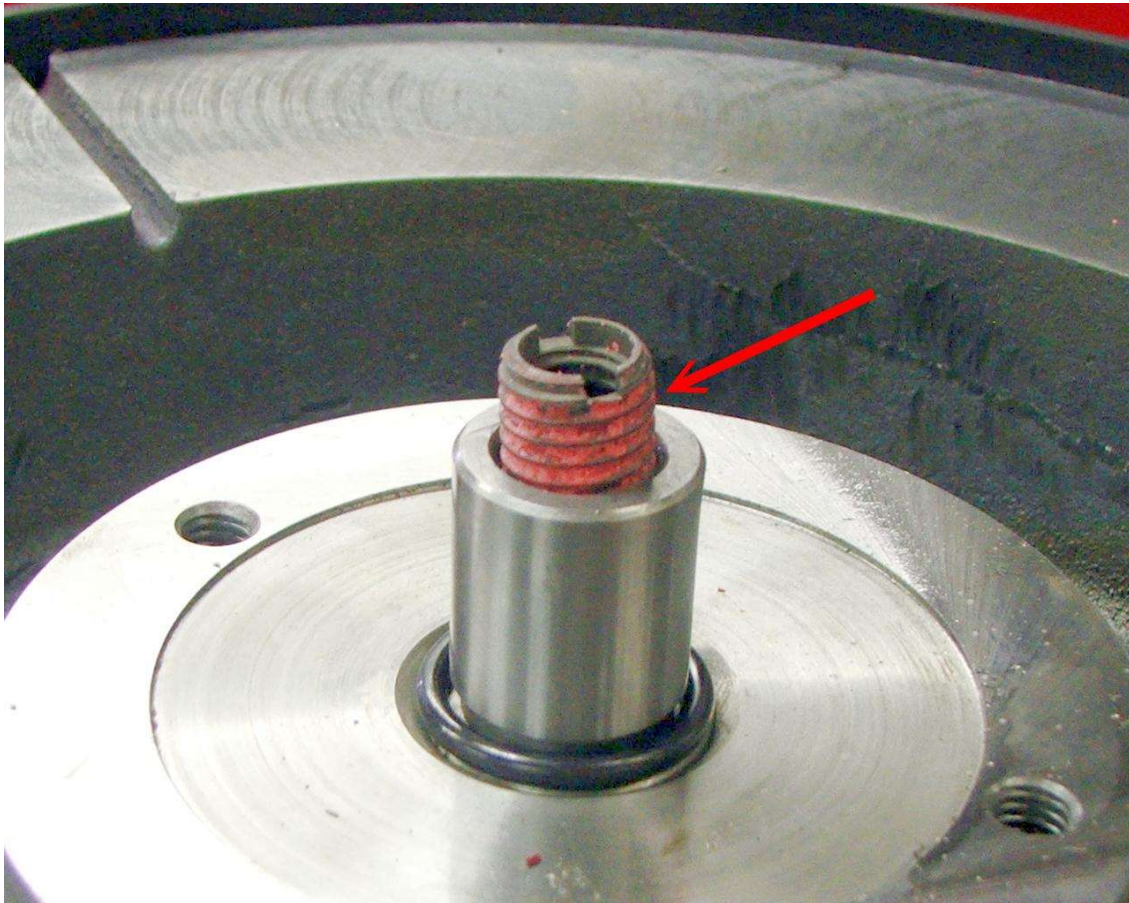


### Van Norman Flywheel Grinder E-Z Lock

The E-Z Lock insert (shown below) is a replaceable set of threads in the center of your Grinding Table. The images below will show the location of the E-Z Lock with the Table Top removed.

(NOTE: It is NOT always necessary to remove the table top when removing and inserting a new E-Z Lock.)

The E-Z Lock Removal Tool is included with your Flywheel Grinder to assist with inserting a new E-Z Lock and with removing a worn E-Z Lock. You'll notice from the photo below that the E-Z Lock is coated with a red material. This material will effectively "Glue" the E-Z Lock threads into place.



Below, you see the E-Z Lock tool provided with your flywheel grinder. It is specially designed to grip the inside of the E-Z Lock insert so that you can tighten or loosen it.



If you have difficulty breaking an old E-Z Lock free to remove it, use a torch to heat the area around the outside where the arrow in the photo below indicates. This will release the red glue-like materials grip and allow you to easily remove the old E-Z Lock.



*Do not overheat. Be cautious using a flame near the table lubricant. And allow to cool before inserting the new E-Z Lock.*

***Be extremely careful to NOT damage the threads in the table shaft itself. Damage to those threads can only be fixed by replacing the table shaft.***